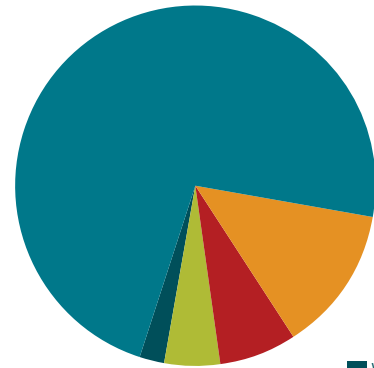
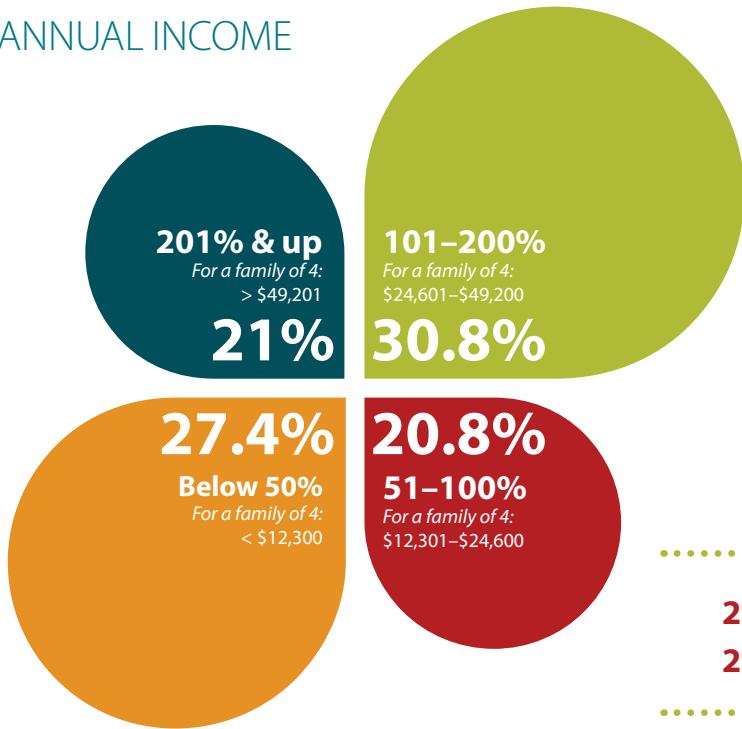




# 2016 annual report

CREATING PROSPERITY & EQUITY IN THE LIVES OF THE PEOPLE WE SERVE

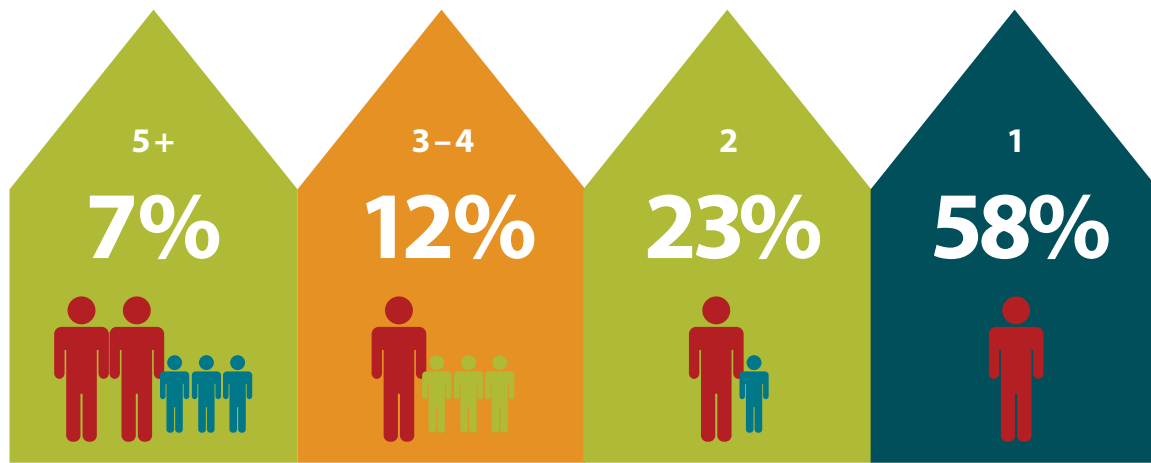
## ANNUAL INCOME



## RACE

- White 73%
- Black/African American 13%
- Native American/Alaskan Native 6.5%
- Multi-Race (any 2+) 5.5%
- Other, Asian, Native Hawaiian/Pacific Islander 2%

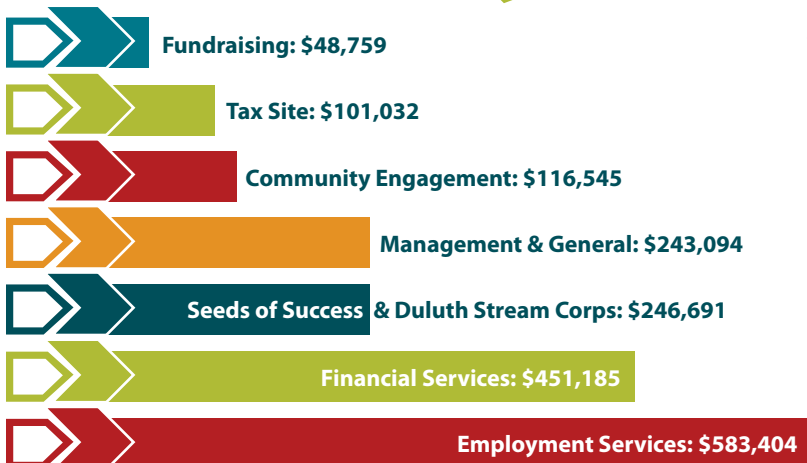
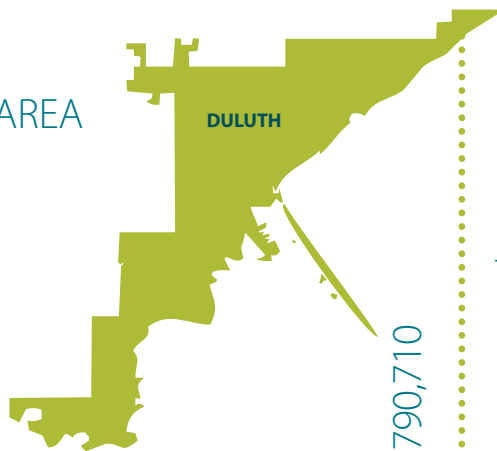
**2,657 INDIVIDUALS SERVED**  
**2,487 FAMILIES SERVED**



## HOUSEHOLD SIZES

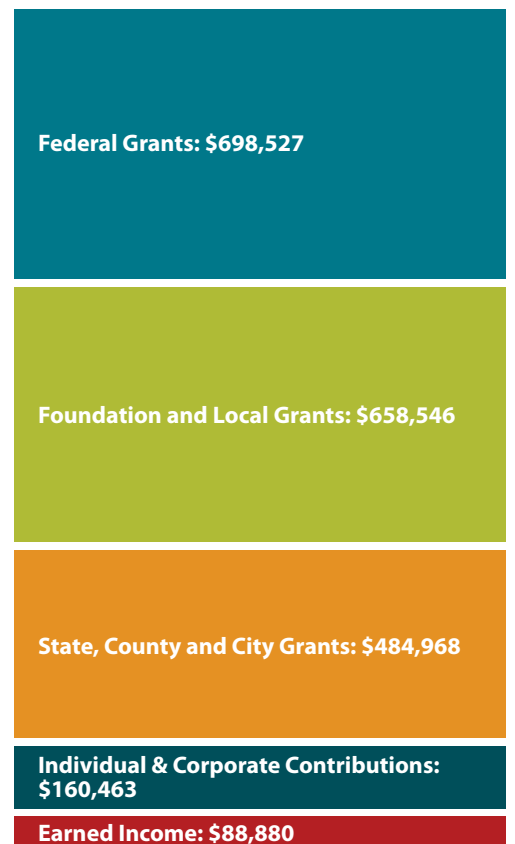
## GEOGRAPHIC SERVICE AREA

Community Action Duluth serves people who live in the city of Duluth and surrounding area. The tax site also serves residents of Wisconsin.



ANNUAL EXPENSES: \$1,790,710

ANNUAL REVENUE: \$2,091,384



## OUR MISSION

To empower and engage our community to eliminate poverty, and create prosperity and equity in the lives of the people we serve.

# 2016 results



purchased their first home



### Board of Directors

Mimi Stender, Chair | Frank Jewell, Vice Chair | Leann Oehlerking-Boes, Treasurer | Shannon RedBrook, Secretary | James Hacking | Anne Holy | Rosie Loeffler-Kemp | Melissa Meyer | Claire Musech | Cheryl Prince | Barb Russ | Phoebe Smith | Heidi Timm-Bijold | Urania Roque Vanyo | Sharon Witherspoon

2424 West 5th Street, Suite 102 | Duluth, Minnesota 55806 | P: 218-726-1665 | F: 218-726-1612

